

SATCHEL PROJECTS

Resia Schor

War and Peace

April 11 - May 11, 2024

CHECKLIST



Heartbreak
1979
Brass, gouache and gold leaf on paper, Plexiglas
12 x 24 in
MSRS 01



Untitled (Emblem and Creation)
1982
Gouache on paper, white metal, blue Plexiglas
24 x 36 in
MSRS 02



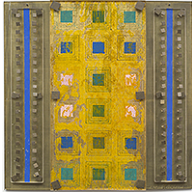
Untitled
1984
Gouache on paper, white metal, Plexiglas
12 x 12 in
MSRS 03



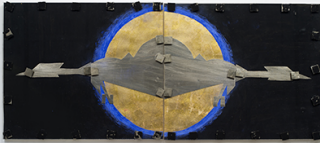
Lockerbie
1990
Gouache on paper, white metal, Plexiglas
24 x 24 x 1 in
MSRS 04



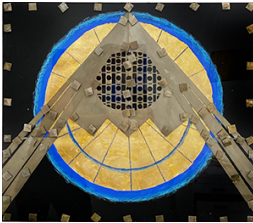
The Black Sun of Melancholy
1988
Gouache on paper, gold leaf, white metal, Plexiglas
On the back: a poem by Gerard de Nerval, "Les Chimères"
12 x 48 in
MSRS 05



Untitled
1980
Gouache and gold leaf on paper, brass and Plexiglas
12 x 12 x 1/2 in
MSRS 06



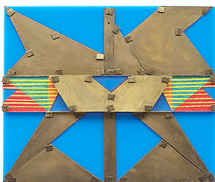
B-2 Stealth
1989
Gouache, gold leaf, pastel on paper, white metal, Plexiglas
Diptych, 12 x 48 in overall
MSRS 07



Untitled
1989
Gouache, gold leaf, pastel on paper, white metal, Plexiglas
21 x 24 in
MSRS 08



Nike
1981
Brass, Plexiglas, gouache on paper
34 x 12 in
MSRS 09



Untitled
1984
Blue Plexiglas, brass, gouache on paper
10 x 12 x 1/2 in
MSRS 10

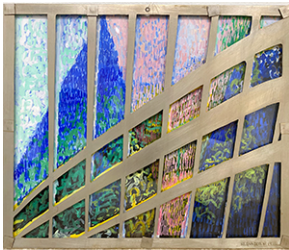


Storm on the Cape
1985
Gouache on paper, white metal and Plexiglas
12 x 12
MSRS 11

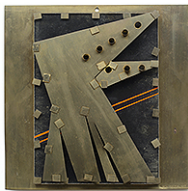


Red Sun
1987
Gouache on paper, gold leaf, white metal, Plexiglas
12 x 48 in
MSRS 12

FLAT FILE



Untitled
1986
Gouache on paper, white metal and Plexiglas
12 x 14 in
MSRS 13



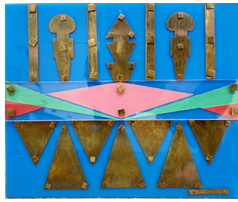
Nike
1981
Brass, Plexiglas, gouache on paper
12 x 12 in
MSRS 14



A-6 Intruder
1990
Gouache on paper, white metal, plexiglas,
12 x 24"
MSRS 15



Untitled
1986
Brass, gouache on paper, gold leaf, Plexiglas
12 x 12 x 3/4 in
MSRS 16



Untitled
1986
Brass, gouache on paper, Plexiglas
10 x 12 x 3/4 in
MSRS 17



Mezuzah
1997
Brass, Plexiglas, gouache on paper
12 x 6"
MSRS 18